



BEFORE
AFTER



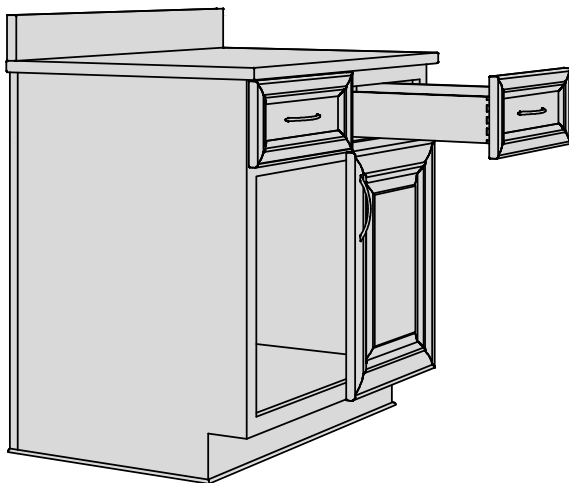
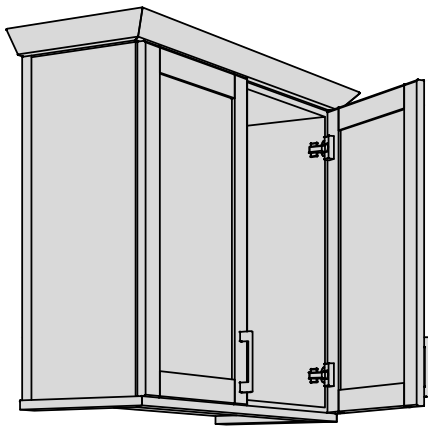
REFACING PRODUCTS

REFACING
PRODUCTS

Cabinet refacing is an economical alternative to an entire kitchen cabinetry replacement in a renovation project. A careful evaluation with clients to make sure that refacing is the right choice for them should be done before establishing if it is the correct fit. There are several reasons that refacing can be an excellent option for your customers. In most cases, refacing projects can cost considerably less than a complete cabinetry replacement. Not only do they not have to replace the cabinet boxes, there is also no need for your customer to replace counter tops, flooring, back splash or repaint if they don't want to. Homeowners may have expensive granite or solid surface counter tops that they don't wish to replace, but can refresh their cabinetry with new doors reflecting current styles and colors. Another major consideration is the reduced time a refacing project takes to complete. Many refacing projects can be completed in 1

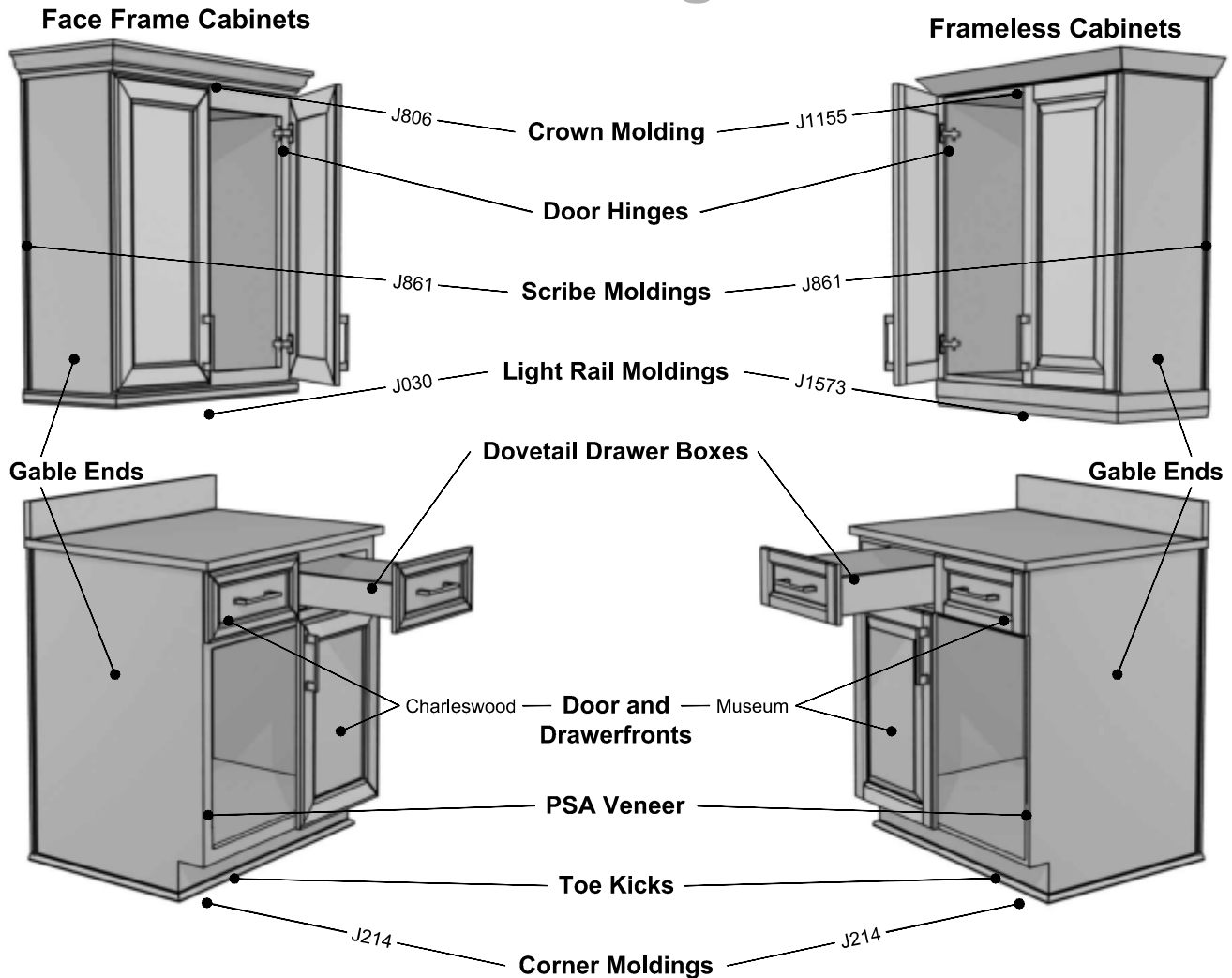
to 3 days and in most cases the kitchen is still functional and the home can be lived in during the installation period. Some homeowners may also like the fact that refacing creates less waste and is a more environmentally friendly option. Add-on cabinets are also available for those that require that option. If your customers are happy with their current kitchen layout and the existing cabinet boxes are structurally sound, refacing is easily accomplished and can provide cost savings to your customers while generating increased revenue for your company.

The cabinet refacing products in the following section of this catalog are comprised of products found within different sections of this catalog. This section helps to show what products may be required for the different needs of a refacing project. There are four main categories which are divided up by materials used. They are; Stained Wood, Painted Wood, Rigid Thermofoil (RTF) and 5-Piece Laminate (Polyester). Each of the four sections has some slight differences in the product offerings; please spend time studying the products that are available. If you have any other questions, please call one of our Customer Service Specialists.



Wood Our wood cabinet refacing program consists of a broad selection of door styles, colors and wood types. When a wood species is chosen for your project you should note that the beauty of a stained wood door comes from the natural characteristics of the wood with its variations of color and grain. Shading of lighter and darker grain and other features contribute to the distinctive appearance that makes each piece in the kitchen unique. The grain and texture of the wood may range slightly which contributes to making genuine wood cabinet doors so attractive. You can be confident in the craftspeople at Elias Woodwork to make choices that will be aesthetically pleasing, making your customers home a warm and inviting place for years to come.

Wood Refacing Products



Following is a list of products available with the wood line:

1. Door Styles

- Tenon (cope and stick) doors. Please see Tenon door styles and options on pages 26-36 or on our website.
- Miter doors. Please see Miter door styles and options on pages 40-58 or on our website.
- Slab doors. Please see Slab door styles and options on pages 62-64 or on our website.
- For available wood species see pages 10-13.
- See our website for available color options.

2. Sheet Goods

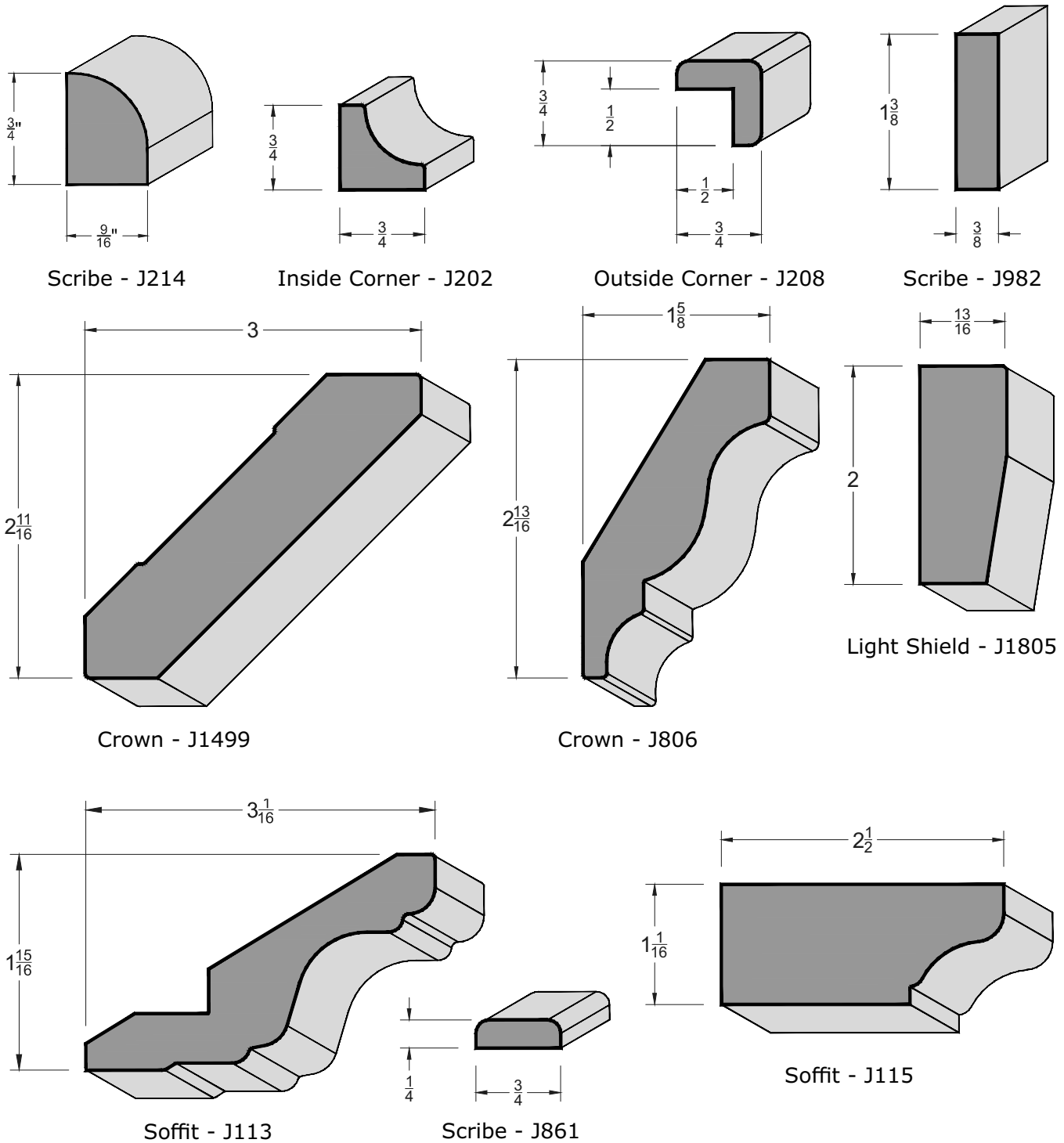
A wide range of sheet goods are available for your refacing project to match your color choice. Please see "Sheet Goods" on page 120 for a more detailed description and stock lists.

Wood sheet goods available:

- 4'x8' wood veneers with a 10 mm paper backer
- 2'x8' with a pressure sensitive adhesive backer (PSA)
- 4'x8' veneer on veneer (two ply)
- 4'x8' veneer on 1/8" core.
- 5.2 mm core with good two side veneers, available in 4'x8' or cut to size.
- 3/8" core with good two side veneers, available in 4'x8' or cut to size.
- 5/8" core with good two side veneers, available in 4'x8' or cut to size. 5/8" may also be ordered with edge banding.
- 3/4" core with good two side veneers, available in 4'x8' or cut to size. 3/4" may also be ordered with edge banding.

3. Molding Suggestions

For a full selection of moldings please see the Molding section on pages 134-175.



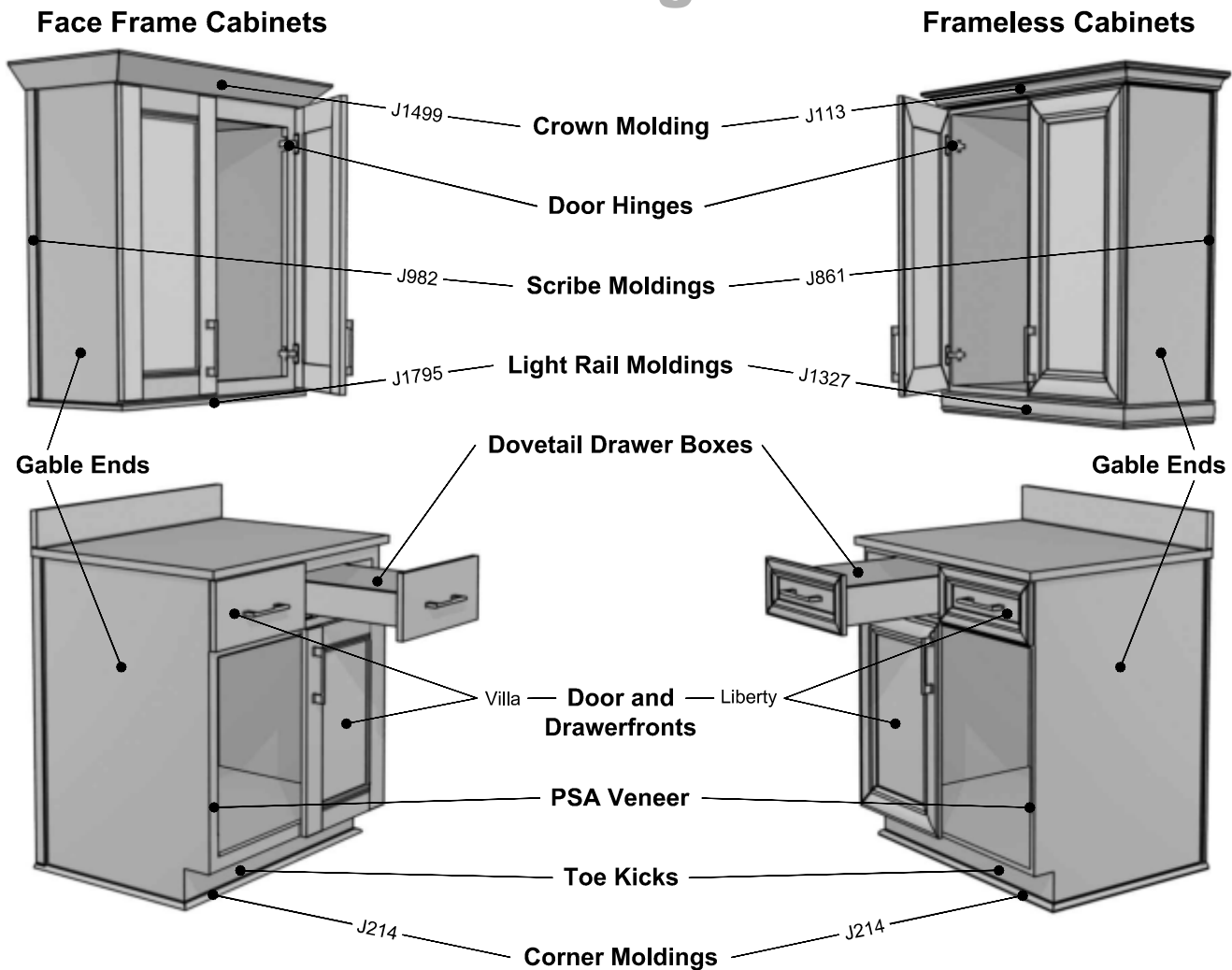
4. Wood Accessories

A wide range of wood products may be required in your project such as wood corbels, posts, fluted fillers, drawer boxes or custom corner shelves. Elias can manufacture these items for your project, please ask your Customer Service Specialist for assistance.

Paint Painted cabinets give you an elegant, high-end look that will be sure to impress all guests. Our Painted Cabinet Refacing Program gives you a choice of many different door styles and paint colors. Our "paint" is actually a multiple stepped

catalyzed lacquer, machine sprayed and oven dried. This process will ensure you are selling a high quality, long lasting finish. The elegant look of a painted finish will ensure your customer will think of their kitchen as the center piece of their house.

Paint Refacing Products



Following is a list of products available with the Paint line:

1. Door Styles

- Tenon (cope and stick) doors. Please see Tenon door styles and options on pages 26-36 or on our website.
- Miter doors. Please see Miter door styles and options on pages 40-58 or on our website.
- Slab doors. Please see Slab door styles and options on pages 62-64 or on our website.

Once a door style has been selected please note that a combination of wood and HDF will be used in the manufacturing process for a painted door. Please see our website and obtain a painted sample chain of our available colors.

2. Sheet Goods

A wide range of sheet good thicknesses are available with the painted program. HDF is our standard default paintable sheet good. Please see "Sheet Goods" on page 120 for a more detailed description.

REFACING PROGRAM

Paint / RTF Refacing Products

Available paintable sheet goods:

- 2'x8' with a pressure sensitive adhesive backer (PSA)
- 1/8" HDF, available in 4'x8' sheets or cut to size.
- 5.2 mm HDF, available in 4'x8' or cut to size.
- 3/8" HDF, available in 4'x8' or cut to size.
- 5/8" HDF, available in 4'x8' or cut to size. 5/8" may also be ordered with edge banding.
- 3/4" HDF, available in 4'x8' or cut to size. 3/4" may also be ordered with edge banding.
- HPL (High Pressure Laminate), available cut to size up to 48" x 96" sheets.

3. Molding Suggestions

See molding suggestions on page 216. For more molding options see the wood moldings section of this catalog on pages 134-175.

- Crown and Soffit: J113, J1155, J806, J1499
- Light Shield: J1573
- Outside corner cap: J208
- Inside corner: J202
- Scribe: J982, J861, J214

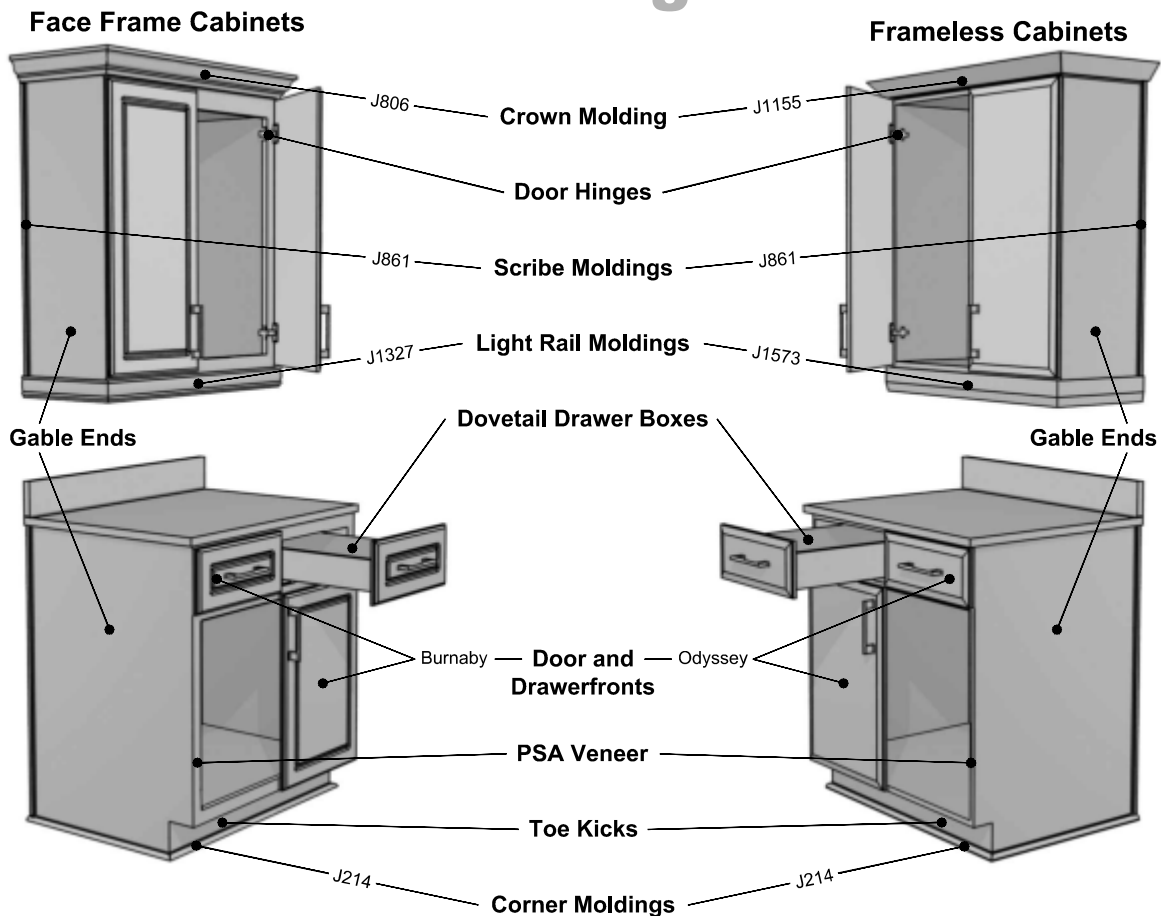
4. Painted Accessories

A wide range of wood products may be required in your project such as wood corbels, posts, fluted fillers, drawer boxes or custom corner shelves. Elias can manufacture these items for your project, please ask your Customer Service Specialist for assistance.

RTF Thermofoil doors are easy to care for, economical, durable, chip and scratch resistant. Thermofoiling is a process whereby a layer of PVC vinyl is glued onto a one piece HDF board. This process uses a

membrane press that heats the vinyl and uses vacuum pressure to form the vinyl into the routed designs. Thermofoil refacing is a great way to change an old, dated kitchen into a kitchen that feels modern and new again.

RTF Refacing Products



Following is a list of products available with the RTF line:

1. Doors Styles

See available options on pages 178-187.

- Choose a route pattern, groove profile and outside edge.
- See our website for available colors. We recommend ordering a sample chain.

2. Sheet Goods

A wide range of sheet goods thicknesses are available with the RTF program. Our standard default when pressing sheet goods is to use HDF sheet as the core product. Please see "Sheet Goods" on page 189 for more details.

Available RTF sheet goods:

- Vinyl only, available 54" x 96".
- 2'x8' with a pressure sensitive adhesive backer (PSA), not available cut to size.
- 1/8" HDF core, cut to size with a maximum of 40"x90".
- 5.2mm HDF core, cut to size with a maximum of 40"x90".

- 3/8" HDF core, cut to size with a maximum of 40"x90".
- 5/8" HDF core, cut to size with a maximum of 40"x90".
- 3/4" HDF core, cut to size with a maximum of 40"x90".
- HPL (High Pressure Laminate), available cut to size up to 48" x 96" sheets.

3. Molding Suggestions

For more molding options see the moldings section on pages 134-175. See Wood Refacing Program on page 216 for diagrams.

- Crown and Soffit: J113, J1155, J806 and J1499
- Light Shield: J1573
- Outside corner cap: J208
- Inside corner: J202
- Scribe: J982, J861, J214
- Paint Accessories

4. Accessories

Drawer Boxes and custom accessories can be manufactured for your project. please ask your Customer Service Specialist for assistance.

5-Piece Laminate (Polyester)

5-Piece Laminate (Polyester) cabinet refacing program features several door styles in several finishes. The products in this section have an extremely durable polyester finish. This finish is highly scratch resistant and will remain looking new for years to come. The prints we have chosen for this program look very much like the wood that they are simulating. The rich colors in the DLV program have realistic textures that will be sure to transform your cabinetry into modern works of art.

Following is a list of products available with the DLV line:

1. Door Styles

For available door styles see page 205 or visit our website. We recommend ordering color samples for accurate color representation. See our website for current color availability

2. Sheet Goods

Only two options are available for DLV sheet goods. Our standard default when pressing

sheet goods is to use HDF sheets as the core product. For more details see page 206.

Available DLV sheet goods:

- 2' x 8' with pressure sensitive adhesive backer (PSA by 3M) not available cut-to-size.
- DLV on 5.2 mm core, 4' x 8', Good Two Sides (G2S) available in 4' x 8' sheets or cut-to-size.
- HPL (High Pressure Laminate), available cut to size up to 48" x 96" sheets.

3. Molding Suggestions

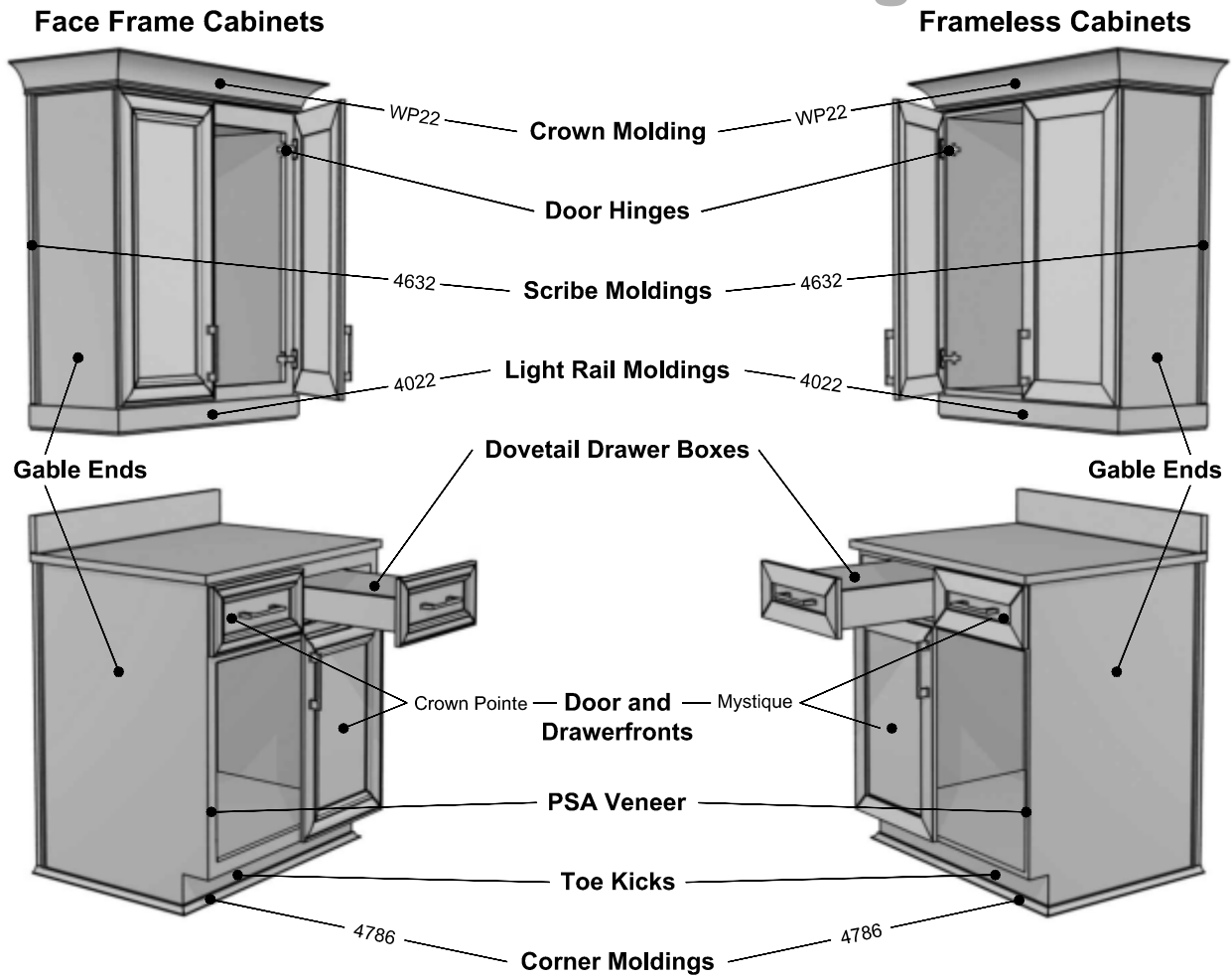
See page 206 for molding diagrams.

- Crown: WP22
- Light Shield: 4022
- Outside corner: 4439
- Inside corner: 4786
- Scribe: 4632

4. Accessories

Replacement drawer boxes can be provided for your refacing project.

5-Piece Laminate Refacing Products



NOTES
